



VÍCETÓNOVÉ MULTIFUNKČNÍ SIRÉNY

Série AS

874060405

ASS-P 8 tónová siréna vel.1 24V

- Čtyři různé velikosti
- Třída krytí: IP 66
- Až 127 dB



POPIS PRODUKTU

SPECIFIKACE

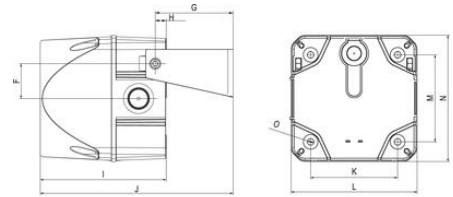
Barva těla	Červená
Druh montáže	Nezávislý
Frekvence max.	4600 Hz
Frekvence min.	500 Hz
Hladina zvuku max.	108 dB
Hmotnost	300 g
Jmenovitý proud max.	0,1 A
Jmenovitý proud min.	0,1 A
Napájecí napětí	24 V
Napájecí napětí AC/DC max.	26,4 V
Napájecí napětí AC/DC min.	21,6 V
Ovládání zvuku	Ano
Počet tónů	8 ks
Provozní teplota max.	60 °C
Provozní teplota min.	-30 °C
Průměr	94 mm
Průřez vodičů	2,5 mm ²



The sound pressure decreases by 6 dB when doubling the distance; the following distance table is to be seen as indication, as also factors like tone type, wind speed, wind direction, humidity, weather conditions etc. do influence the sound pressure level.

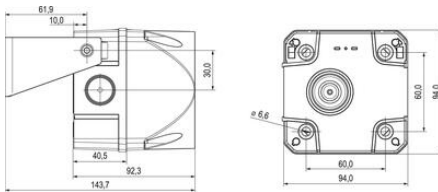
Distance (m)	Sound pressure dB (A)																				
1	65	70	75	80	85	90	92	94	96	99	100	102	104	106	108	110	112	114	116	118	120
2	59	64	69	74	79	84	86	88	90	92	94	96	98	100	102	104	106	108	110	112	114
3	55	60	65	70	75	80	82	84	86	88	90	92	94	96	98	100	102	104	106	108	110
5	51	56	61	66	71	76	78	80	82	84	86	88	90	92	94	96	98	100	102	104	106
10	45	50	55	60	65	70	72	74	76	78	80	82	84	86	88	90	92	94	96	98	100
20	39	44	49	54	59	64	66	68	70	72	74	76	78	80	82	84	86	88	90	92	94
30	35	40	45	50	55	60	62	64	66	68	70	72	74	76	78	80	82	84	86	88	90
50	36	41	46	51	56	60	62	64	66	68	70	72	74	76	78	80	82	84	86	88	90
100		40	45	50	54	58	60	62	64	66	68	70	72	74	76	78	80	82	84	86	88
200		39	44	48	52	56	58	60	62	64	66	68	70	72	74	76	78	80	82	84	86
500		38	42	46	49	52	54	56	58	60	62	64	66	68	70	72	74	76	78	80	82

The sound pressure decreases by 6 dB when doubling the distance



	A	B	C	D	E	F	G	H	I	J	K	L	M	N	O
Size 2	143	95	10	32	50	36,5	81,5	11,5	131,5	98,8	91	131,8	91	131,8	6,5
Size 3	199	113	16	48	70	55	105,5	18,5	168,9	118,4	124	183,5	124	183,5	6,5
Size 4	243,3	140	25	70	100	83	133,3	16,8	216,9	146,6	167	228,4	167	228,4	6,5

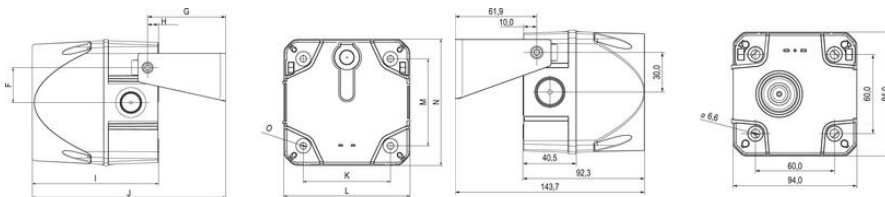
Measuring unit mm



The sound pressure decreases by 6 dB when doubling the distance; the following distance table is to be seen as indication, as also factors like tone type, wind speed, wind direction, humidity, weather conditions etc. do influence the sound pressure level.

Distance (m)	Sound pressure dB (A)																				
1	65	70	75	80	85	90	92	94	96	99	100	102	104	106	108	110	112	114	116	118	120
2	59	64	69	74	79	84	86	88	90	92	94	96	98	100	102	104	106	108	110	112	114
3	55	60	65	70	75	80	82	84	86	88	90	92	94	96	98	100	102	104	106	108	110
5	51	56	61	66	71	76	78	80	82	84	86	88	90	92	94	96	98	100	102	104	106
10	45	50	55	60	65	70	72	74	76	78	80	82	84	86	88	90	92	94	96	98	100
20	39	44	49	54	59	64	66	68	70	72	74	76	78	80	82	84	86	88	90	92	94
30	35	40	45	50	55	60	62	64	66	68	70	72	74	76	78	80	82	84	86	88	90
50	36	41	46	51	56	60	62	64	66	68	70	72	74	76	78	80	82	84	86	88	90
100		40	45	50	54	58	60	62	64	66	68	70	72	74	76	78	80	82	84	86	88
200		39	44	48	52	56	58	60	62	64	66	68	70	72	74	76	78	80	82	84	86
500		38	42	46	49	52	54	56	58	60	62	64	66	68	70	72	74	76	78	80	82

The sound pressure decreases by 6 dB when doubling the distance



	A	B	C	D	E	F	G	H	I	J	K	L	M	N	O
Size 2	143	95	10	32	50	36,5	81,5	11,5	131,5	98,8	91	131,8	91	131,8	6,5
Size 3	199	113	16	48	70	55	105,5	18,5	168,9	118,4	124	183,5	124	183,5	6,5
Size 4	243,3	140	25	70	100	83	133,3	16,8	216,9	146,6	167	228,4	167	228,4	6,5

Measuring unit mm