



## PNEUMATICKÉ VÁLCE G450

Série G450

G450APSK0050A00

Pneumatiký válec Ø125 mm, 50 mm

- ISO 15552
- Ø125mm až 200mm
- Zdvih 5mm až 100mm
- Jedno nebo dvojčinné

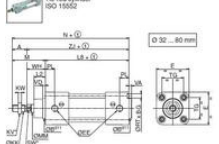


### POPIS PRODUKTU

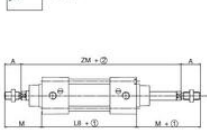
### SPECIFIKACE

|                              |                                |
|------------------------------|--------------------------------|
| Druh montáže                 | Nezávislý                      |
| Funkce 1                     | Dvoučinný, Pneumatické tlumení |
| Materiál čela                | Hliník                         |
| Materiál těla                | Eloxovaný hliník               |
| Matice pístnice              | Pozinkovaná ocel               |
| Max. dovolený tlak           | 10 bar                         |
| Pístnice                     | Pochromovaná kalená ocel       |
| Pracovní tlak dvoučinný max. | 10 bar                         |
| Pracovní tlak dvoučinný min. | 0 bar                          |
| Připojení pro pilotní vzduch | G1/2                           |
| Provozní teplota max.        | 70 °C                          |
| Provozní teplota min.        | -20 °C                         |
| Průměr pístu                 | 125 mm                         |
| Těsnění pístnice             | PUR                            |
| Těsnění pístu                | PUR                            |
| Vnitřní díly                 | Hliník, POM                    |
| Vnitřní píst                 | Hliník                         |
| Zdvih                        | 50 mm                          |

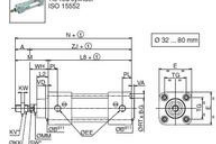
**DIMENSIONS (mm), WEIGHT (kg)**



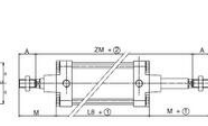
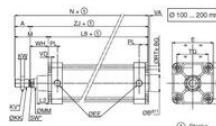
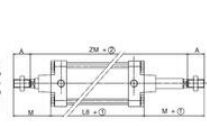
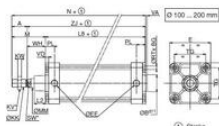
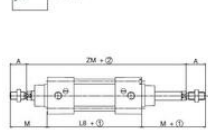
**THROUGH-ROD TYPE CYLINDER**



**DIMENSIONS (mm), WEIGHT (kg)**



**THROUGH-ROD TYPE CYLINDER**



| Ø   | A  | DB | BG | E   | DEE  | ØDK      | KV | KW   | L2 | L   | M   | ØMM | N   | PL   | ØRT | TG | VA   | WH   | ZZ | ZM | W  | W <sub>0</sub> |     |       |
|-----|----|----|----|-----|------|----------|----|------|----|-----|-----|-----|-----|------|-----|----|------|------|----|----|----|----------------|-----|-------|
| 52  | 23 | 36 | 16 | 40  | 51.5 | M12x1.25 | 16 | 11   | 17 | 18  | 18  | 18  | 18  | 18   | 18  | 18 | 18   | 18   | 18 | 18 | 18 | 18             | 18  |       |
| 40  | 24 | 35 | 16 | 54  | 61.4 | M12x1.25 | 18 | 6    | 19 | 105 | 54  | 16  | 159 | 10   | M6  | 13 | 38   | 41.4 | 4  | 4  | 30 | 135            | 185 | 0.564 |
| 60  | 24 | 40 | 16 | 66  | 61.4 | M12x1.5  | 24 | 8    | 24 | 106 | 66  | 20  | 175 | 16.5 | M8  | 17 | 46.5 | 46.6 | 4  | 4  | 32 | 142            | 185 | 0.915 |
| 63  | 24 | 45 | 16 | 78  | 63.8 | M12x1.5  | 24 | 8    | 24 | 121 | 78  | 20  | 195 | 17   | M8  | 17 | 56.5 | 41.4 | 4  | 4  | 37 | 158            | 195 | 1.000 |
| 80  | 24 | 48 | 17 | 86  | 63.8 | M12x1.5  | 30 | 10   | 30 | 126 | 86  | 25  | 229 | 18.5 | M10 | 22 | 72   | 41.4 | 4  | 4  | 41 | 174            | 220 | 1.465 |
| 100 | 40 | 55 | 17 | 115 | 63.8 | M12x1.5  | 30 | 10   | 35 | 138 | 115 | 25  | 259 | 21   | M10 | 22 | 89   | 41.4 | 4  | 4  | 51 | 189            | 240 | 2.075 |
| 120 | 54 | 60 | 24 | 140 | 63.8 | M12x1.5  | 41 | 13.5 | 40 | 160 | 140 | 30  | 279 | 22   | M12 | 27 | 110  | 41.4 | 4  | 4  | 60 | 220            | 290 | 3.365 |
| 160 | 72 | 65 | 29 | 160 | 63.8 | M12x2    | 55 | 18   | 60 | 180 | 160 | 40  | 340 | 24   | M16 | 36 | 140  | 41.4 | 4  | 4  | 80 | 260            | 340 | 5.100 |
| 200 | 72 | 78 | 35 | 200 | 63.8 | M12x2    | 55 | 18   | 68 | 180 | 160 | 40  | 347 | 26   | M16 | 36 | 178  | 41.4 | 4  | 4  | 90 | 275            | 370 | 7.675 |

(H) Weight to be added per additional 100 mm length.

| Ø   | A  | DB | BG | E   | DEE  | ØDK      | KV | KW   | L2 | L   | M   | ØMM | N   | PL   | ØRT | TG | VA   | WH   | ZZ | ZM | W  | W <sub>0</sub> |     |       |
|-----|----|----|----|-----|------|----------|----|------|----|-----|-----|-----|-----|------|-----|----|------|------|----|----|----|----------------|-----|-------|
| 52  | 23 | 36 | 16 | 40  | 51.5 | M12x1.25 | 16 | 11   | 17 | 18  | 18  | 18  | 18  | 18   | 18  | 18 | 18   | 18   | 18 | 18 | 18 | 18             |     |       |
| 40  | 24 | 35 | 16 | 54  | 61.4 | M12x1.25 | 18 | 6    | 19 | 105 | 54  | 16  | 159 | 10   | M6  | 13 | 38   | 41.4 | 4  | 4  | 30 | 135            | 185 | 0.564 |
| 60  | 24 | 40 | 16 | 66  | 61.4 | M12x1.5  | 24 | 8    | 24 | 106 | 66  | 20  | 175 | 16.5 | M8  | 17 | 46.5 | 46.6 | 4  | 4  | 32 | 142            | 185 | 0.915 |
| 63  | 24 | 45 | 16 | 78  | 63.8 | M12x1.5  | 24 | 8    | 24 | 121 | 78  | 20  | 195 | 17   | M8  | 17 | 56.5 | 41.4 | 4  | 4  | 37 | 158            | 195 | 1.000 |
| 80  | 24 | 48 | 17 | 86  | 63.8 | M12x1.5  | 30 | 10   | 30 | 126 | 86  | 25  | 229 | 18.5 | M10 | 22 | 72   | 41.4 | 4  | 4  | 41 | 174            | 220 | 1.465 |
| 100 | 40 | 55 | 17 | 115 | 63.8 | M12x1.5  | 30 | 10   | 35 | 138 | 115 | 25  | 259 | 21   | M10 | 22 | 89   | 41.4 | 4  | 4  | 51 | 189            | 240 | 2.075 |
| 120 | 54 | 60 | 24 | 140 | 63.8 | M12x1.5  | 41 | 13.5 | 40 | 160 | 140 | 30  | 279 | 22   | M12 | 27 | 110  | 41.4 | 4  | 4  | 60 | 220            | 290 | 3.365 |
| 160 | 72 | 65 | 29 | 160 | 63.8 | M12x2    | 55 | 18   | 60 | 180 | 160 | 40  | 340 | 24   | M16 | 36 | 140  | 41.4 | 4  | 4  | 80 | 260            | 340 | 5.100 |
| 200 | 72 | 78 | 35 | 200 | 63.8 | M12x2    | 55 | 18   | 68 | 180 | 160 | 40  | 347 | 26   | M16 | 36 | 178  | 41.4 | 4  | 4  | 90 | 275            | 370 | 7.675 |

(H) Weight to be added per additional 100 mm length.